

Fact Book

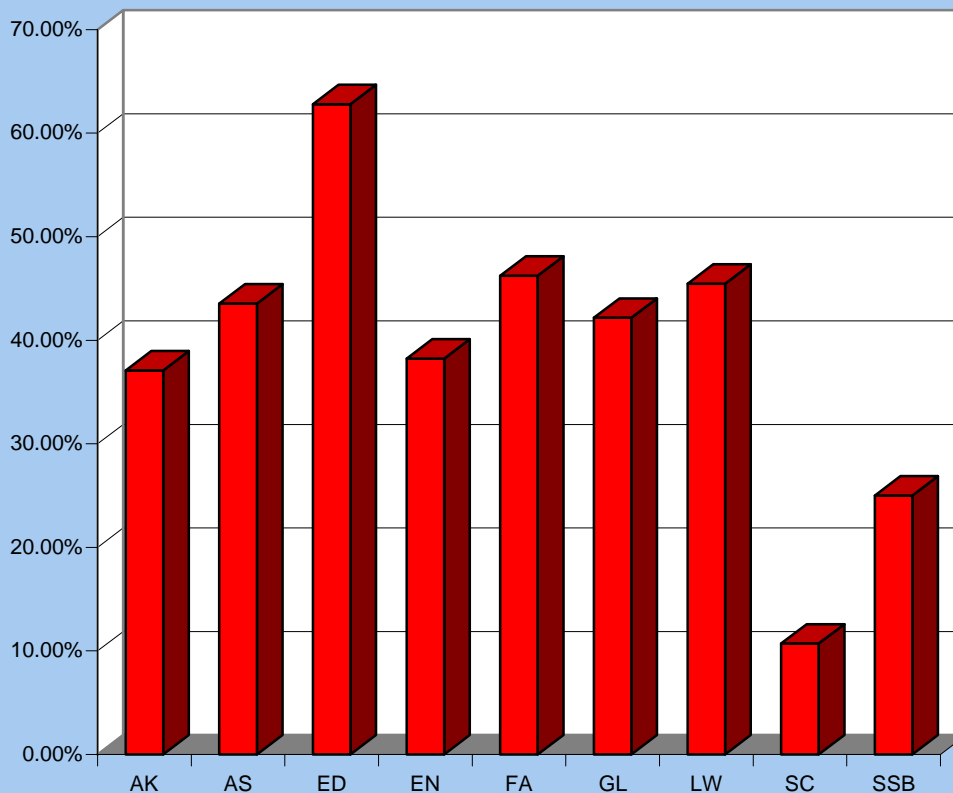
2000-2001

YORK UNIVERSITY - UNIVERSITÉ YORK

Full Time Faculty Distribution By Gender -- October 1, 2000

Faculty	Male		Female		Total		Grand Total
	<u>Ten/Prob</u>	<u>C.L.</u>	<u>Ten/Prob</u>	<u>C.L.</u>	<u>Ten/Prob</u>	<u>C.L.</u>	
Arts	323	18	184	17	507	35	542
Atkinson	79	4	57	7	136	11	147
Education	16	0	25	2	41	2	43
Environmental Studies	21	0	13	0	34	0	34
Fine Arts	48	2	39	4	87	6	93
Glendon	46	2	34	1	80	3	83
Osgoode	28	2	20	5	48	7	55
Pure and Applied Science	125	0	15	0	140	0	140
Schulich School of Business	49	2	17	0	66	2	68
Total	735	30	404	36	1,139	66	1,205

Percentage of Female F/T Faculty as of October 1, 2000



Contractually Limited Faculty are full-time faculty with contracts of defined term